

**EN Brief update instruction
for CC 9048 and CC 9058
hands-free car kits**





This update presumes a Windows PC/laptop with Windows 7

Pre-Update Requirements.

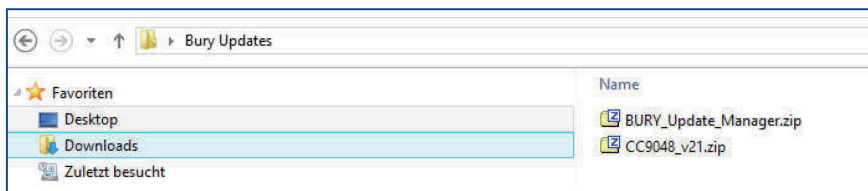
Download the Bury Update Manager to your PC or Laptop.

Download the latest Firmware for your device to your PC or Laptop.

<http://www.bury.com/consumer/en/products/kategorie/via-bluetooth-without-display/produkt/cc-9048-1/seite/downloads.html>

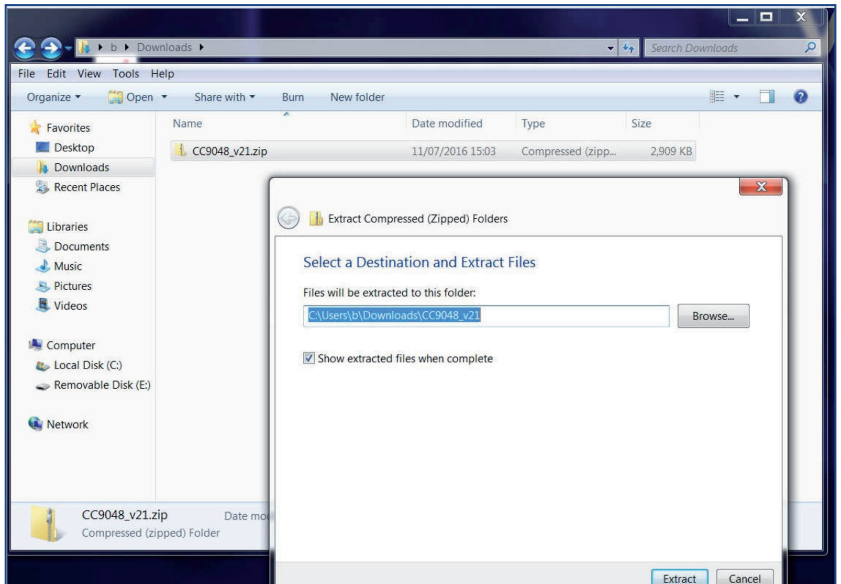
Software					
	BURY Update Manager.zip		08.03.2013	zip	2,14 MB
	CC 9048 Firmware v21	Firmware	25.11.2013	zip	2,84 MB
	CC 9048 Firmware v20	Firmware	06.06.2013	zip	2,84 MB
	CC 9048 Firmware v16	Firmware	07.01.2013	dfu	3,36 MB

Create a new a folder (e.g. Bury Updates) and place it on your desktop or somewhere you can easily find later. If you didn't create a special folder in which to download these files, you will probably find them stored under "Downloads"



Install the Bury Update Manager from that folder.

Now choose the zipped CC 9048 firmware and unpack/extract that file.



Before we update:

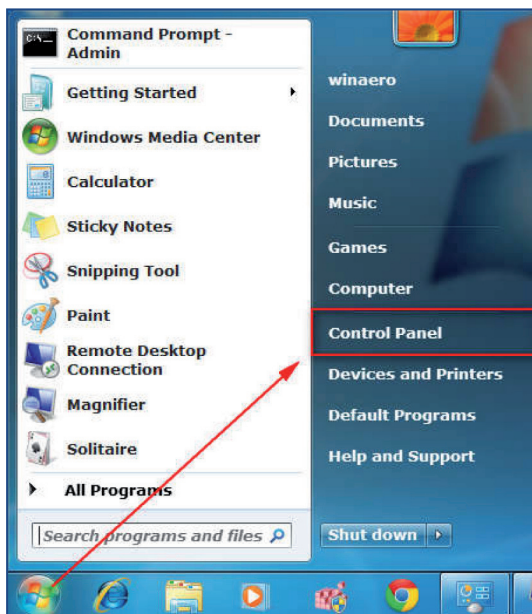
We must first ensure, that the USB driver is installed on your PC properly, otherwise the Bury Update Manager will not recognise your car kit. This only needs to be done once.

On your PC/laptop

a) Click on the "Start Menu" button



b) Go to "Control panel"

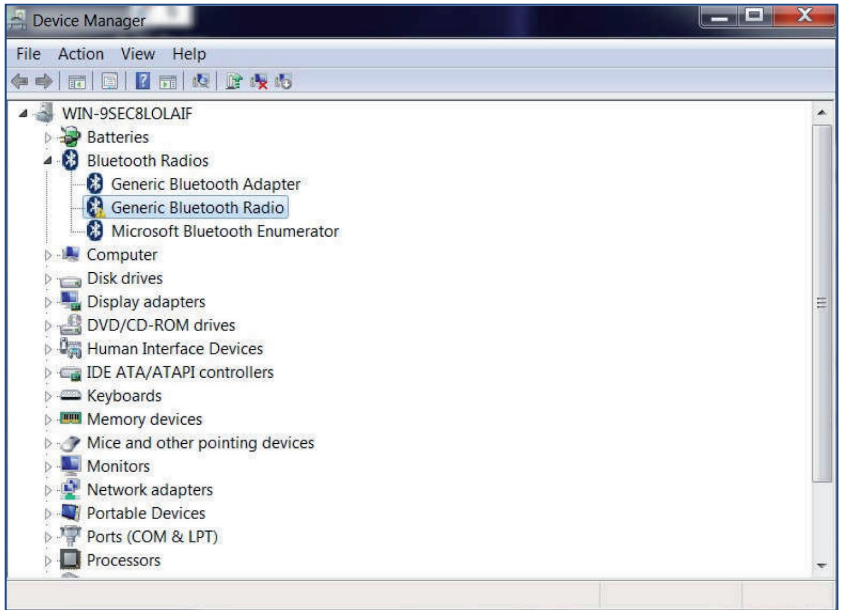


c) Go to "System"

d) Then "Device Manager"



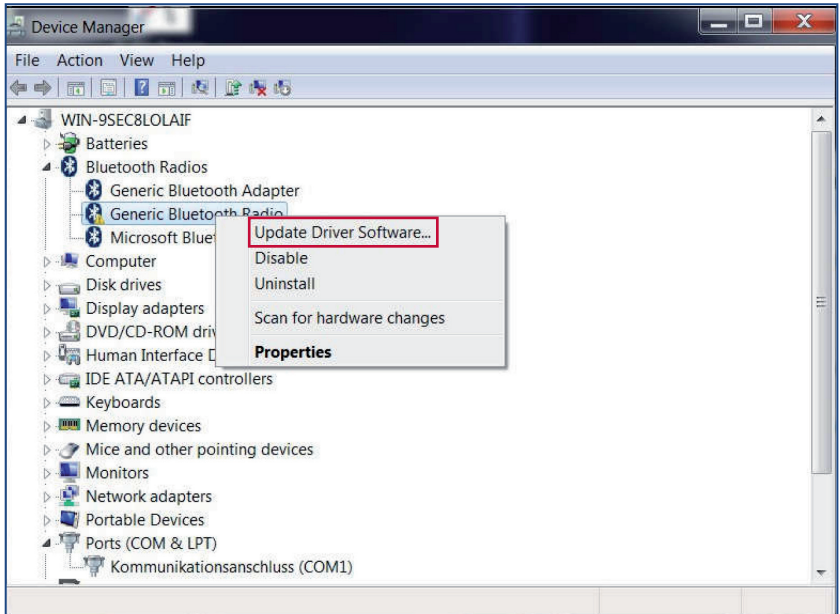
e) Choose Generic Bluetooth Radio and click with your right mouse button.



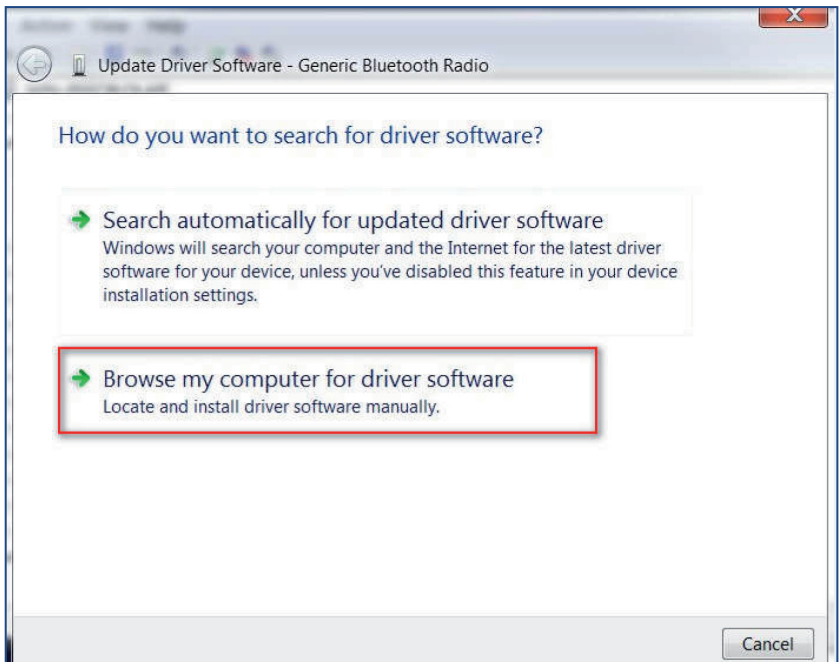
Note:

► If you can't see any Bluetooth options in the list, make sure Bluetooth is switched on on your PC/laptop.

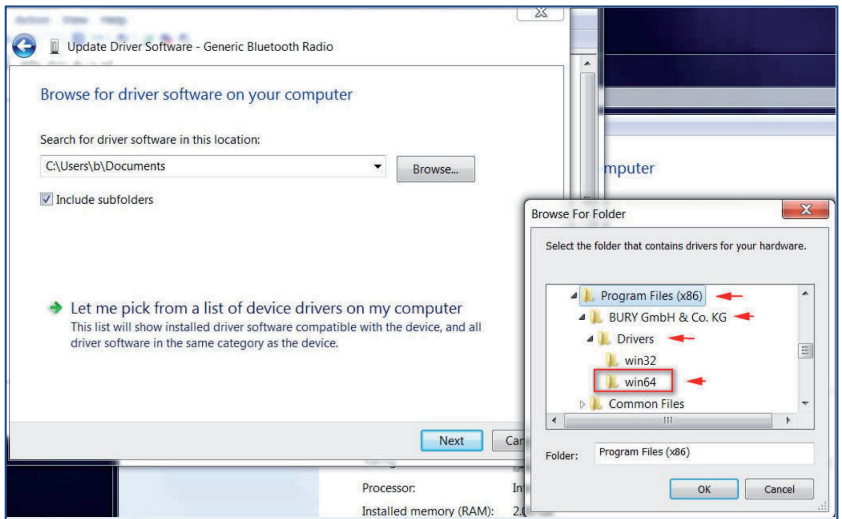
f) Choose Update Driver Software



g) Choose the Manual search method (not automatically)

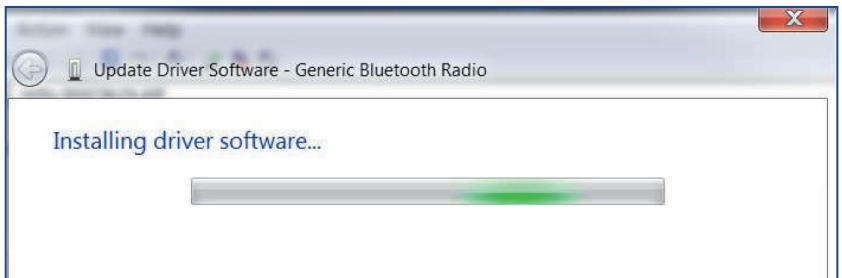


h) Browse to C:\Program Files (x86)\Bury GmbH & Co.KG\Drivers\win64** **dependent on your system

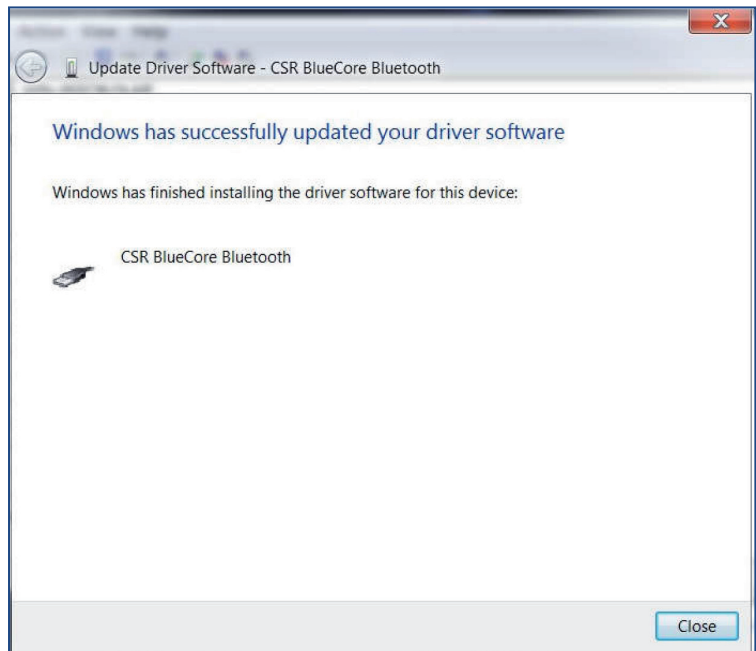


i) Press OK

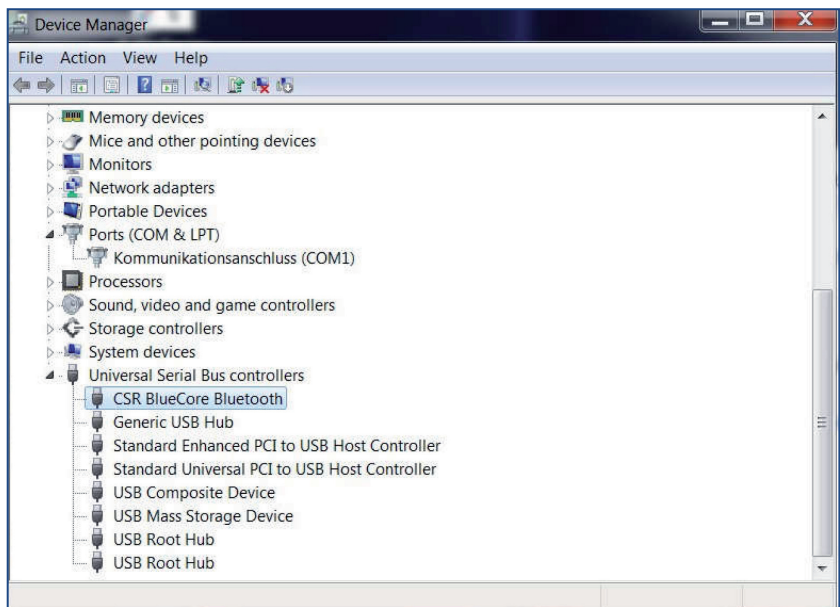
j) Press Next – the driver will install.



k) Press close.



a CSR BlueCore Bluetooth controller should now be recognised.



l) Close all settings windows and return to desktop.

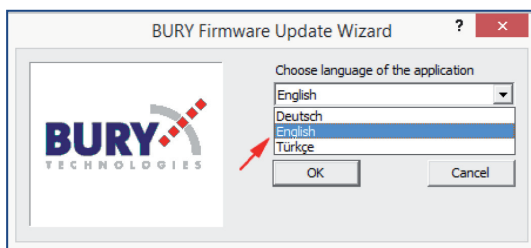
Update your Car Kit Firmware

If your Car kit is already installed in the vehicle, then switch off the ignition.

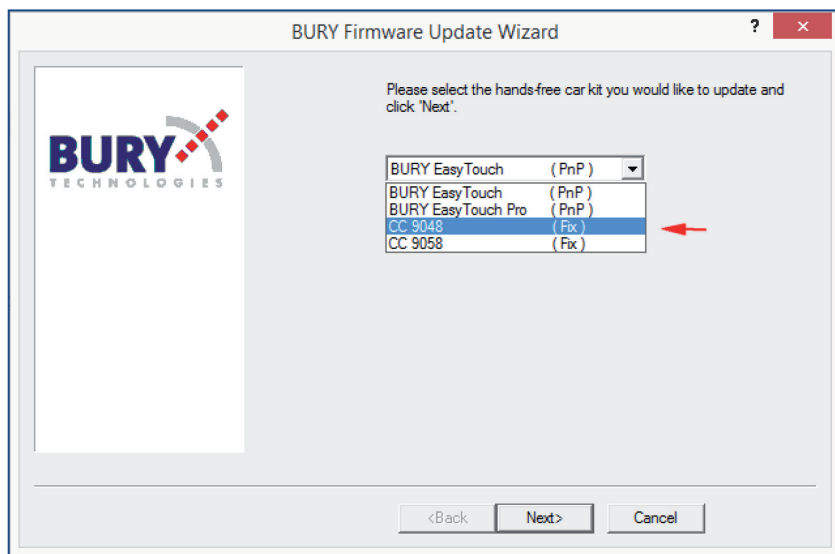
Start the Bury update manager,



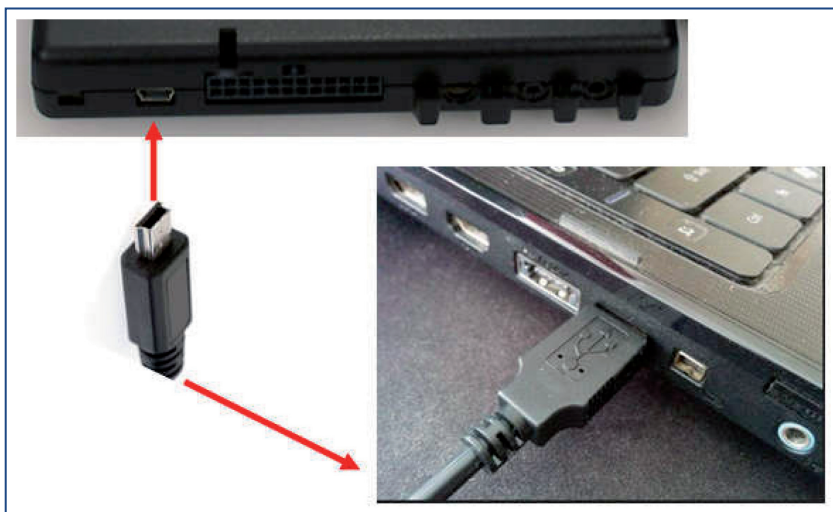
choose preferred language (English)



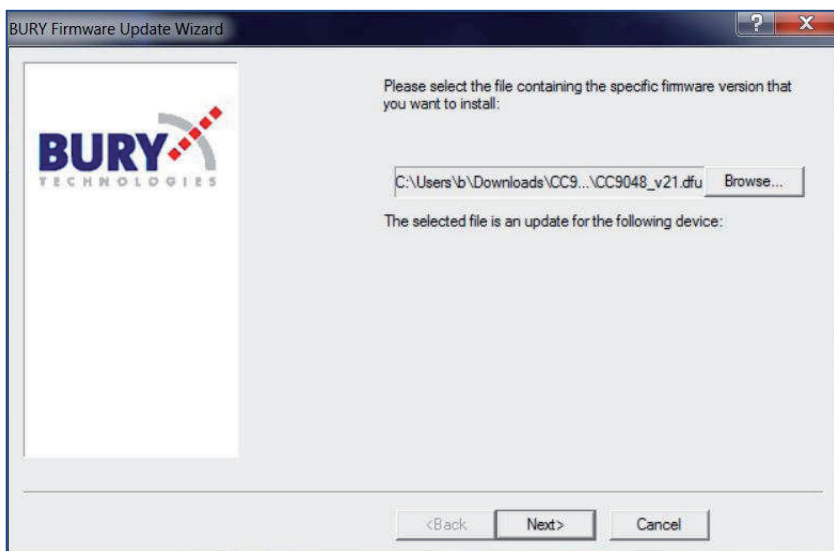
and choose the Bury product you wish to update (CC 9048 or CC 9058)



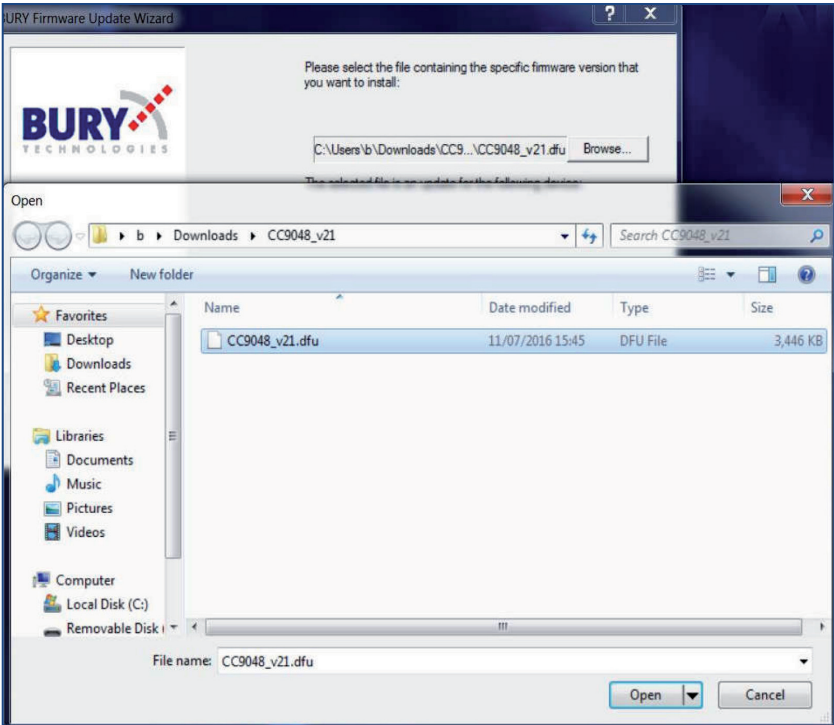
Connect the control box to your PC/Laptop with a mini USB to USB type 'A' cable (not supplied).



Search for the car kit firmware you extracted earlier. This will be a file with a "dfu" suffix

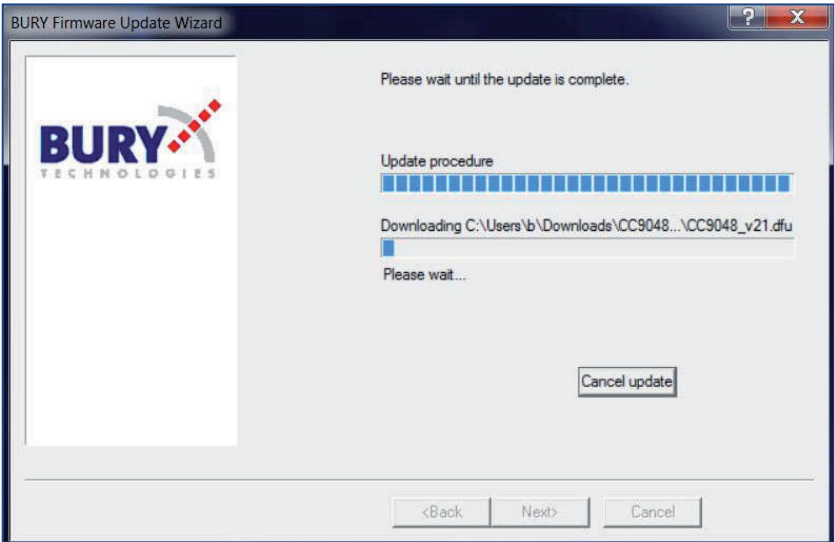


Press Next



Select Open

Press Next

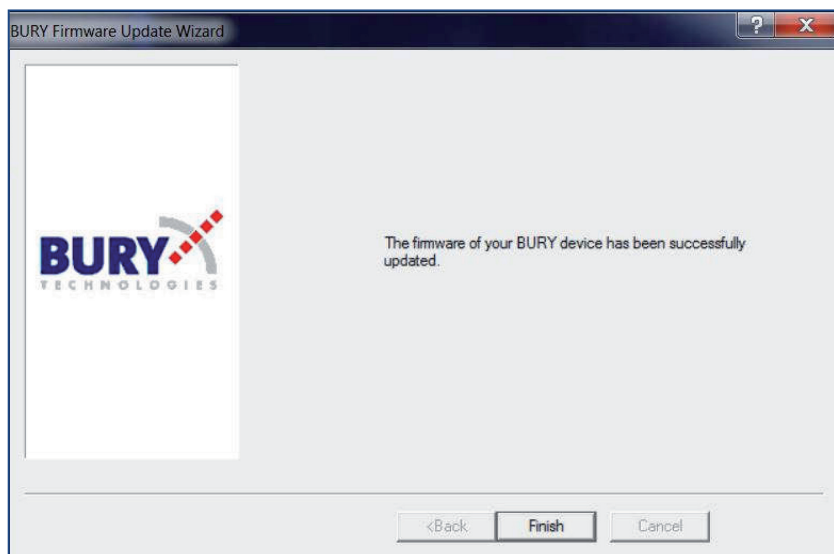


The car kit control box will now start to update. This can take a number of minutes (10-15) depending on your PC/laptop.

Important:

► This update process should not be disturbed or interrupted under any circumstances. Ensure the power to your PC is stable. Do not try to start the vehicle or turn on the ignition. Any disturbance of the firmware update could render your car kit unservicable

Press Finish



Your car kit is now updated.

To find the software version of the CC 9048.

- a) On your mobile phone select Bluetooth.
- b) From the listed Bluetooth devices select CC 9048 which will show the FW version number.